

<https://www.fortuneandcoates.co.uk>

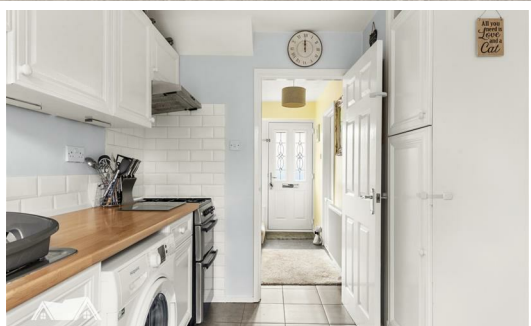


**FORTUNE & COATES**

The People's Estate Agent



FORTUNE & COATES



## 59 Waterhouse Moor, Harlow, CM18 6BB

Guide price £300,000

Guide Price £300,000- £325,000.

Fortune and Coates are pleased to offer to the market this two bedroom family home situated in the sought after location of Waterhouse Moor, Harlow.

This home is presented to a high standard throughout and comprises an inviting entrance hallway that leads to a bright and airy lounge that leads round to a spacious dining room that overlooks the rear garden. The kitchen offers a range of wall and base units with plenty of cupboard space.

Upstairs features two generously sized double bedrooms and a recently fitted immaculate family bathroom.

Outside, the rear garden is mainly laid to lawn with an ample patio area for entertaining. There is also a brick built shed and rear access.

Lounge 11'1" x 12'0" (3.38 x 3.67)

Dining Room 7'9" x 10'5" (2.37 x 3.18)

Kitchen 10'1" x 7'10" max (3.08 x 2.39 max)

Bedroom 9'1" max x 15'5" (2.79 max x 4.72)

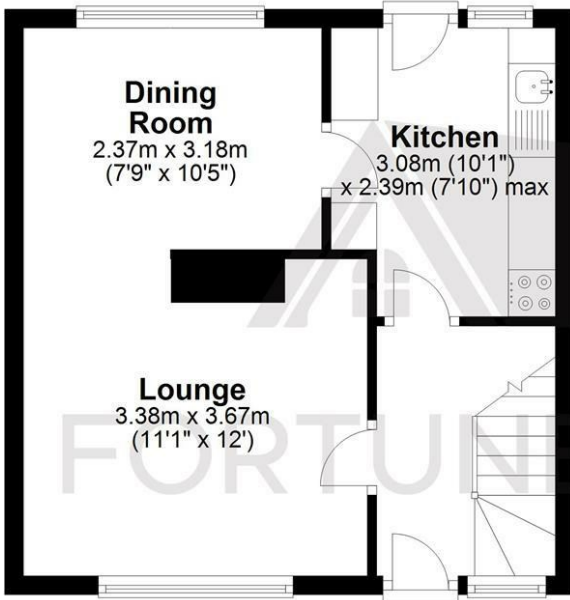
Bedroom 9'8" x 11'0" max (2.96 x 3.37 max)

AGENT NOTE: The information provided about this property does not constitute or form part of an offer or contract, nor may it be regarded as representations. All interested parties must verify accuracy and your solicitor must verify tenure/lease information, fixtures & fittings and, where the property has been extended/converted, planning/building regulation consents. All dimensions are approximate and quoted for guidance only as are floor plans which are not to scale and their accuracy cannot be confirmed. Reference to appliances and/or services does not imply that they are necessarily in working order or fit for the purpose.

## Floor Plan

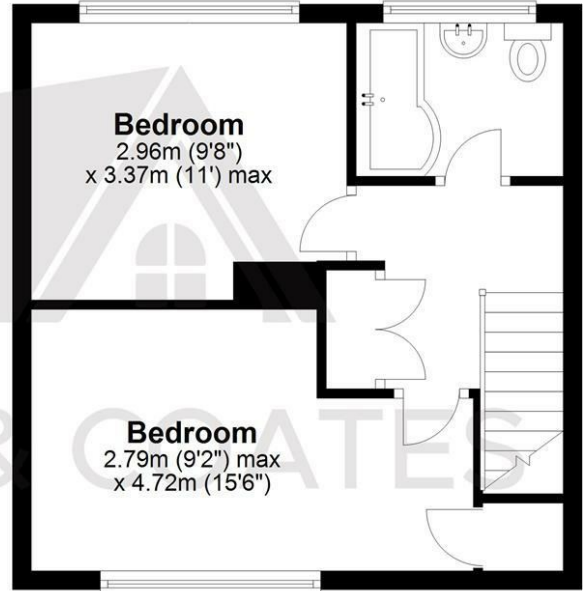
### Ground Floor

Approx. 33.2 sq. metres (357.0 sq. feet)



### First Floor

Approx. 33.2 sq. metres (357.0 sq. feet)

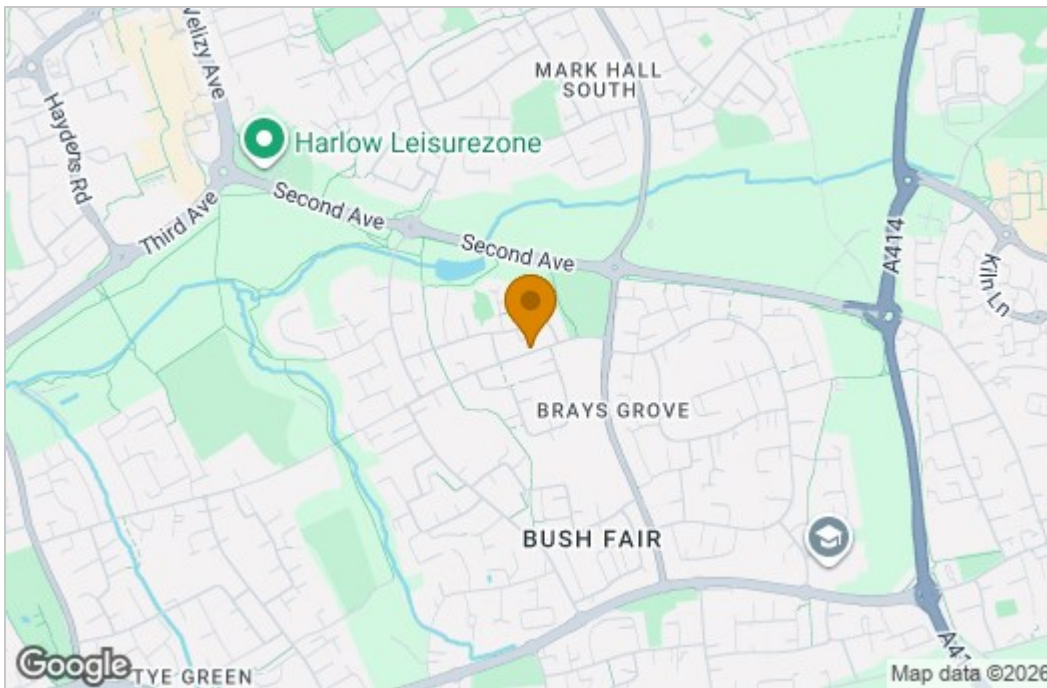


Total area: approx. 66.3 sq. metres (714.1 sq. feet)

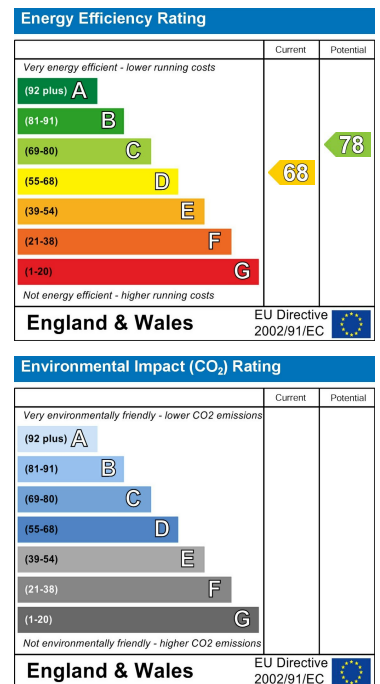
THE FLOORPLAN IS FOR ILLUSTRATIVE PURPOSES ONLY AND IS NOT TO SCALE. Measurements and features are approximate and may differ from the actual property. Verify all details independently; no liability is accepted for errors or omissions.

Property marketing provided by [www.fotomarketing.co.uk](http://www.fotomarketing.co.uk)

## Area Map



## Energy Efficiency Graph



These particulars, whilst believed to be accurate are set out as a general outline only for guidance and do not constitute any part of an offer or contract. Intending purchasers should not rely on them as statements of representation of fact, but must satisfy themselves by inspection or otherwise as to their accuracy. No person in this firm's employment has the authority to make or give any representation or warranty in respect of the property.